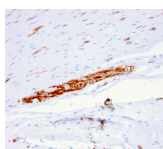


# CD56 / NCAM Monoclonal Mouse Antibody (ERIC-1)



## Product Description

This MAb reacts with an extracellular domain (close to transmembrane) of CD56/NCAM. Three isoforms of neural cell adhesion molecule (NCAM) are produced by differential splicing of the RNA transcript from a single gene. The 135 kDa isoform is the basic molecule, which is glycosylated or sialylated to produce the mature species. Anti-CD56 recognizes two proteins of the neural cell adhesion molecule, the basic molecule expressed on most neuroectodermally derived tissues and neoplasms (e. g. retinoblastoma, medulloblastomas, astrocytomas, neuroblastomas, and small cell carcinomas). It is also expressed on some mesodermally derived tumors (rhabdomyosarcoma). Anti-CD56 plays an important role in the diagnosis of nodal and nasal NK/T-cell lymphomas.

Primary antibodies are available purified, or with a selection of fluorescent CF® dyes and other labels. CF® dyes offer exceptional brightness and photostability. See the [CF® Dye Brochure](#) for more information. Note: Conjugates of blue fluorescent dyes like CF®405S and CF®405M are not recommended for detecting low abundance targets, because blue dyes have lower fluorescence and can give higher non-specific background than other dye colors.

**Stock status:** Because Biotium offers a large number of antibody and conjugation options, primary antibody conjugates may be made to order. Typical lead times are up to one week for CF® dye and biotin conjugates, and up to 2-3 weeks for fluorescent protein and enzyme conjugates. Please email [order@biotium.com](mailto:order@biotium.com) to inquire about stock status and lead times before placing your order.

**Catalog number key for antibody number 1602, Anti-CD56|NCAM1|NKH1 (ERIC-1)**

## Product attributes

Antibody number	#1602
Antibody reactivity (target)	CD56, NCAM1, NKH1
Antibody type	Primary
Host species	Mouse
Clonality	Monoclonal
Clone	ERIC-1
Isotype	IgG1, kappa
Molecular weight	180, 145 and 125 kDa
Synonyms	NCAM; Leu-19; NKH1; MSK39; NCAM120; NCAM140; NCAM180; Neural Cell Adhesion Molecule
Human gene symbol	NCAM1
Entrez gene ID	4684
SwissProt	P13591 & P13592
Unigene	503878
Immunogen	Recombinant human NCAM1 protein
Antibody target cellular localization	Plasma membrane
Verified antibody applications	IHC (FFPE) (verified)
Species reactivity	Human, Rat
Antibody application notes	For coating for ELISA, order Ab without BSA, Higher concentration may be required for direct detection using primary antibody conjugates than for indirect detection with secondary antibody. Optimal dilution and staining procedure for a specific application should be determined by user. Recommended starting concentrations for titration are 1-2 ug/mL for most applications, or 1 ug/million cells/100 uL for flow cytometry
Positive control	Cerebellum, Pancreas, Neuroblastoma
Shipping condition	Room temperature
Storage Conditions	Note: store BSA-free antibodies at -10 to -35°C, Store at 2 to 8 °C, Protect fluorescent conjugates from light
Regulatory status	For research use only (RUO)
Antibody/conjugate formulation	Conjugates: 0.1 mg/mL in PBS/0.1% BSA/0.05% azide, HRP conjugates: 0.1 mg/mL in PBS/0.05% BSA, Purified: 0.2 mg/mL in PBS/0.05% BSA/0.05% azide, Purified, BSA-free: 1 mg/mL in PBS without azide
Shelf life	Guaranteed for at least 24 months from date of receipt when stored as recommended
Product origin	Product may contain either bovine serum albumin (BSA) from bovine serum ( <i>Bos taurus</i> ), or recombinant BSA produced in Chinese hamster ovary cells. Inquire for the specific lot.
Cell/tissue expression	Skeletal Muscle, Neurons, NK cells
Antibody research areas	Cancer, Cell adhesion, Neuroscience
Tumor expression	Neuroectodermal cancer

Antibody # prefix	Conjugation	Ex/Em (nm)	Laser line	Detection channel	Dye Features
BNC04	CF®405S	404/431	405	DAPI (microscopy), AF405	<a href="#">CF®405S Features</a>
BNC88	CF®488A	490/515	488	GFP, FITC	<a href="#">CF®488A Features</a>
BNC68	CF®568	562/583	532, 561	RFP, TRITC	<a href="#">CF®568 Features</a>
BNC94	CF®594	593/614	561	Texas Red®	<a href="#">CF®594 Features</a>
BNC40	CF®640R	642/662	633-640	Cy®5	<a href="#">CF®640R Features</a>
BNC47	CF®647	650/665	633-640	Cy®5	<a href="#">CF®647 Features</a>
BNC74	CF®740	742/767	633-685	775/50	<a href="#">CF®740 Features</a>
BNCB	Biotin	N/A	N/A	N/A	
BNUB	Purified	N/A	N/A	N/A	
BNUM	Purified, BSA-free	N/A	N/A	N/A	

Alexa Fluor, Pacific Blue, Pacific Orange, and Texas Red are trademarks or registered trademarks of Thermo Fisher Scientific; Cy is a registered trademark of Cytiva; IRDye, LI-COR, and Odyssey are registered trademarks of LI-COR Bioscience.

This datasheet was generated on February 12, 2025 at 11:15:24 AM. Visit product page to check for updated information before use. Product link: <http://54.245.69.9/product/cd56-ncam-monoclonal-mouse-antibody-eric-1/>