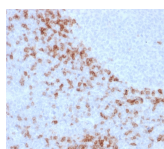


# Human IgD Monoclonal Mouse Antibody (IgD26)



## Product Description

Immunoglobulins are four-chain, Y-shaped, monomeric structures comprised of two identical heavy chains and two identical light chains held together through interchain disulfide bonds. The chains form two domains, the Fab (antigen binding) fragment and the Fc (constant) fragment. Immunoglobulin D (IgD) exists as a monomer with light chains. It plays a biological role as a transmembrane receptor molecule, co-expressed with IgM on the surface of mature/naive B cells. In particular, it is found on spleen B cell surfaces. Compared to IgM, IgD exists in much lower numbers and is not expressed on immature B cells. IgD surface expression on B cells is regulated in part by IL-27. In mice, the inhibition of this immunoglobulin isotype does not cause a significant change to the immune system.

Primary antibodies are available purified, or with a selection of fluorescent CF® dyes and other labels. CF® dyes offer exceptional brightness and photostability. See the [CF® Dye Brochure](#) for more information. Note: Conjugates of blue fluorescent dyes like CF®405S and CF®405M are not recommended for detecting low abundance targets, because blue dyes have lower fluorescence and can give higher non-specific background than other dye colors.

**Stock status:** Because Biotium offers a large number of antibody and conjugation options, primary antibody conjugates may be made to order. Typical lead times are up to one week for CF® dye and biotin conjugates, and up to 2-3 weeks for fluorescent protein and enzyme conjugates. Please email [order@biotium.com](mailto:order@biotium.com) to inquire about stock status and lead times before placing your order.

**Catalog number key for antibody number 2097, Anti-IgD (IgD26)**

## Product attributes

Antibody number	#2097
Antibody reactivity (target)	IgD
Antibody type	Primary
Host species	Mouse
Clonality	Monoclonal
Clone	IgD26
Isotype	IgG1, kappa
Molecular weight	44-80 kDa (heavy chain); 21-25 kDa (kappa light chain)
Synonyms	Ig delta chain C region; IGHD; Immunoglobulin heavy constant delta
Human gene symbol	IGHD
Entrez gene ID	3495
SwissProt	P01880
Unigene	510635
Immunogen	Full-length human IGHD protein
Verified antibody applications	IHC (FFPE) (verified)
Antibody target cellular localization	Plasma membrane, Secreted (extracellular)
Species reactivity	Human
Positive control	Human tonsil lysate; NAMALWA cell lysate; Human tonsil and lymphoid tissues
Shipping condition	Room temperature
Storage Conditions	Note: store BSA-free antibodies at -10 to -35 °C, Store at 2 to 8 °C, Protect fluorescent conjugates from light
Regulatory status	For research use only (RUO)
Antibody/conjugate formulation	Conjugates: 0.1 mg/mL in PBS/0.1% BSA/0.05% azide, HRP conjugates: 0.1 mg/mL in PBS/0.05% BSA, Purified: 0.2 mg/mL in PBS/0.05% BSA/0.05% azide, Purified, BSA-free: 1 mg/mL in PBS without azide
Shelf life	Guaranteed for at least 24 months from date of receipt when stored as recommended
Product origin	Product may contain either bovine serum albumin (BSA) from bovine serum ( <i>Bos taurus</i> ), or recombinant BSA produced in Chinese hamster ovary cells. Inquire for the specific lot.
Cell/tissue expression	B-cells
Antibody research areas	Cancer, Immunology, Inflammation
Tumor expression	Leukemia/lymphoma

Antibody # prefix	Conjugation	Ex/Em (nm)	Laser line	Detection channel	Dye Features
BNC04	CF®405S	404/431	405	DAPI (microscopy), AF405	<a href="#">CF®405S Features</a>
BNC88	CF®488A	490/515	488	GFP, FITC	<a href="#">CF®488A Features</a>
BNC68	CF®568	562/583	532, 561	RFP, TRITC	<a href="#">CF®568 Features</a>
BNC94	CF®594	593/614	561	Texas Red®	<a href="#">CF®594 Features</a>
BNC40	CF®640R	642/662	633-640	Cy®5	<a href="#">CF®640R Features</a>
BNC47	CF®647	650/665	633-640	Cy®5	<a href="#">CF®647 Features</a>
BNC74	CF®740	742/767	633-685	775/50	<a href="#">CF®740 Features</a>
BNCB	Biotin	N/A	N/A	N/A	
BNUB	Purified	N/A	N/A	N/A	
BNUM	Purified, BSA-free	N/A	N/A	N/A	

Alexa Fluor, Pacific Blue, Pacific Orange, and Texas Red are trademarks or registered trademarks of Thermo Fisher Scientific; Cy is a registered trademark of Cytiva; IRDye, LI-COR, and Odyssey are registered trademarks of LI-COR Bioscience.

This datasheet was generated on January 30, 2025 at 09:26:58 AM. Visit product page to check for updated information before use. Product link: <http://54.245.69.9/product/human-igd-monoclonal-mouse-antibody-igd26/>