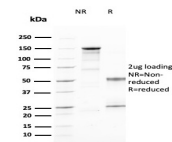


CD25 / IL2RA Monoclonal Mouse
Antibody (IL2RA/2394)



Product Description

Recognizes a protein of 55 kDa, identified as CD25. It is expressed on activated T- and B-cells and activated monocytes/macrophages. With respect to lymphomas, CD25 is present on malignant cells of Hodgkin's disease, HTLV-1 adult T-cell leukemia, cutaneous T-cell lymphoma, and hair cell leukemia. Increased levels of soluble CD25 are observed in the leukemias/lymphomas and inflammatory/ autoimmune diseases. CD25 molecule alone appears to function as a low affinity receptor and associates with CD122 (IL-2R chain, p75) and CD132 (common chain) to form the high affinity IL-2 receptor complex. CD25 antibodies detect three epitope regions, A, B and C. This MAb recognizes the epitope B, which is located at residue 3-104 of CD25 and doe not block IL-2 binding to CD25.

Primary antibodies are available purified, or with a selection of fluorescent CF® dyes and other labels. CF® dyes offer exceptional brightness and photostability. See the [CF® Dye Brochure](#) for more information. Note: Conjugates of blue fluorescent dyes like CF®405S and CF®405M are not recommended for detecting low abundance targets, because blue dyes have lower fluorescence and can give higher non-specific background than other dye colors.

Stock status: Because Biotium offers a large number of antibody and conjugation options, primary antibody conjugates may be made to order. Typical lead times are up to one week for CF® dye and biotin conjugates, and up to 2-3 weeks for fluorescent protein and enzyme conjugates. Please email order@biotium.com to inquire about stock status and lead times before placing your order.

Catalog number key for antibody number 2394, Anti-CD25|IL2RA (IL2RA/2394)

Call us : [800-304-5357](tel:800-304-5357)
Email: btinfo@biotium.com

Product attributes

Antibody number	#2394
Antibody reactivity (target)	CD25, IL2RA
Antibody type	Primary
Host species	Mouse
Clonality	Monoclonal
Clone	IL2RA/2394
Isotype	IgG2b, kappa
Molecular weight	55 kDa
Synonyms	IL2 Receptor alpha; IL2R alpha chain; IL2R; IL2R subunit alpha IL2RA; Interleukin-2 receptor subunit alpha; Ly43; p55; p55 chain; T Cell Growth Factor Receptor; TAC antigen; TCGFR
Human gene symbol	IL2RA
Entrez gene ID	3559
SwissProt	P01589
Unigene	231367
Immunogen	Recombinant human IL2RA protein fragment (around aa 42-183) (exact sequence is proprietary)
Antibody target cellular localization	Plasma membrane
Species reactivity	Human
Antibody application notes	For coating for ELISA, order Ab without BSA. Higher concentration may be required for direct detection using primary antibody conjugates than for indirect detection with secondary antibody. Optimal dilution and staining procedure for a specific application should be determined by user. Recommended starting concentrations for titration are 1-2 ug/mL for most applications, or 1 ug/million cells/100 uL for flow cytometry
Positive control	PHA-stimulated human lymphocytes. Human lymph node or tonsil.
Shipping condition	Room temperature
Storage Conditions	Store at 2 to 8 °C, Protect fluorescent conjugates from light, Note: store BSA-free antibodies at -10 to -35 °C
Regulatory status	For research use only (RUO)
Antibody/conjugate formulation	Conjugates: 0.1 mg/mL in PBS/0.1% BSA/0.05% azide, HRP conjugates: 0.1 mg/mL in PBS/0.05% BSA, Purified: 0.2 mg/mL in PBS/0.05% BSA/0.05% azide, Purified, BSA-free: 1 mg/mL in PBS without azide
Validated in protein array	Monospecific
Shelf life	Guaranteed for at least 24 months from date of receipt when stored as recommended
Product origin	Product may contain either bovine serum albumin (BSA) from bovine serum (Bos taurus), or recombinant BSA produced in Chinese hamster ovary cells. Inquire for the specific lot.
Cell/tissue expression	B-cells, Monocytes/macrophages, T-cells
Tumor expression	Leukemia/lymphoma

Antibody # prefix	Conjugation	Ex/Em (nm)	Laser line	Detection channel	Dye Features
BNC04	CF®405S	404/431	405	DAPI (microscopy), AF405	CF®405S Features
BNC88	CF®488A	490/515	488	GFP, FITC	CF®488A Features
BNC68	CF®568	562/583	532, 561	RFP, TRITC	CF®568 Features
BNC94	CF®594	593/614	561	Texas Red®	CF®594 Features
BNC40	CF®640R	642/662	633-640	Cy®5	CF®640R Features
BNC47	CF®647	650/665	633-640	Cy®5	CF®647 Features
BNC74	CF®740	742/767	633-685	775/50	CF®740 Features
BNCB	Biotin	N/A	N/A	N/A	
BNUB	Purified	N/A	N/A	N/A	
BNUM	Purified, BSA-free	N/A	N/A	N/A	

Alexa Fluor, Pacific Blue, Pacific Orange, and Texas Red are trademarks or registered trademarks of Thermo Fisher Scientific; Cy is a registered trademark of Cytiva; IRDye, LI-COR, and Odyssey are registered trademarks of LI-COR Bioscience.

This datasheet was generated on May 8, 2025 at 04:42:52 PM. Visit product page to check for updated information before use.
Product link: <http://54.245.69.9/product/cd25-il2ra-monoclonal-mouse-antibody-il2ra-2394/>