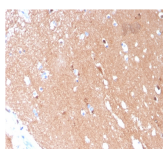


Tubulin beta 3 / TUBB3 Monoclonal Mouse Antibody (TUBB3/3731)



Product Description

This gene encodes a class III member of the beta tubulin protein family. Beta tubulins are one of two core protein families (alpha and beta tubulins) that heterodimerize and assemble to form microtubules. This protein is primarily expressed in neurons and may be involved in neurogenesis and axon guidance and maintenance. Mutations in this gene are the cause of congenital fibrosis of the extraocular muscles type 3. In adults, tubulin beta 3 (TUBB3) is primarily expressed in neurons and is commonly used as a neuronal marker. It plays an important role in neuronal cell proliferation and differentiation.

Primary antibodies are available purified, or with a selection of fluorescent CF® dyes and other labels. CF® dyes offer exceptional brightness and photostability. See the [CF® Dye Brochure](#) for more information. Note: Conjugates of blue fluorescent dyes like CF®405S and CF®405M are not recommended for detecting low abundance targets, because blue dyes have lower fluorescence and can give higher non-specific background than other dye colors.

Stock status: Because Biotium offers a large number of antibody and conjugation options, primary antibody conjugates may be made to order. Typical lead times are up to one week for CF® dye and biotin conjugates, and up to 2-3 weeks for fluorescent protein and enzyme conjugates. Please email order@biotium.com to inquire about stock status and lead times before placing your order.

Catalog number key for antibody number 3731, Anti-TUBB3|Tubulin beta 3 (TUBB3/3731)

Product attributes

Antibody number	#3731
Antibody reactivity (target)	TUBB3, Tubulin beta 3
Antibody type	Primary
Host species	Mouse
Clonality	Monoclonal
Clone	TUBB3/3731
Isotype	IgG1, kappa
Molecular weight	55 kDa
Synonyms	beta 3 tubulin; CDCBM; CDCBM1; CFEOM3; CFEOM3A; FEO3; M(beta)3; M(beta)6; MC1R; Neuron specific beta III Tubulin; Neuron-specific class III beta-tubulin; TUBB3; TUBB4; Tubulin beta-3; Tubulin beta-4; Tubulin beta-III
Human gene symbol	TUBB3
Entrez gene ID	10381
SwissProt	Q13509
Unigene	511743
Immunogen	A synthetic peptide (aa 437-450) of human Tubulin beta 3 protein (TUBB3); coupled to KLH.
Antibody target cellular localization	Cytoskeleton
Verified antibody applications	IHC (FFPE) (verified), WB (verified)
Species reactivity	Human
Positive control	U87, A375, Raji, HEP2 cells. Brain and Testis.
Shipping condition	Room temperature
Storage Conditions	Store at 2 to 8 °C, Protect fluorescent conjugates from light, Note: store BSA-free antibodies at -10 to -35 °C
Regulatory status	For research use only (RUO)
Antibody/conjugate formulation	Conjugates: 0.1 mg/mL in PBS/0.1% BSA/0.05% azide, HRP conjugates: 0.1 mg/mL in PBS/0.05% BSA, Purified: 0.2 mg/mL in PBS/0.05% BSA/0.05% azide, Purified, BSA-free: 1 mg/mL in PBS without azide
Validated in protein array	Monospecific
Shelf life	Guaranteed for at least 24 months from date of receipt when stored as recommended
Product origin	Product may contain either bovine serum albumin (BSA) from bovine serum (<i>Bos taurus</i>), or recombinant BSA produced in Chinese hamster ovary cells. Inquire for the specific lot.

Antibody # prefix	Conjugation	Ex/Em (nm)	Laser line	Detection channel	Dye Features
BNC04	CF®405S	404/431	405	DAPI (microscopy), AF405	CF®405S Features
BNC88	CF®488A	490/515	488	GFP, FITC	CF®488A Features
BNC68	CF®568	562/583	532, 561	RFP, TRITC	CF®568 Features
BNC94	CF®594	593/614	561	Texas Red®	CF®594 Features
BNC40	CF®640R	642/662	633-640	Cy®5	CF®640R Features
BNC47	CF®647	650/665	633-640	Cy®5	CF®647 Features
BNC74	CF®740	742/767	633-685	775/50	CF®740 Features
BNCB	Biotin	N/A	N/A	N/A	
BNUB	Purified	N/A	N/A	N/A	
BNUM	Purified, BSA-free	N/A	N/A	N/A	

Alexa Fluor, Pacific Blue, Pacific Orange, and Texas Red are trademarks or registered trademarks of Thermo Fisher Scientific; Cy is a registered trademark of Cytiva; IRDye, LI-COR, and Odyssey are registered trademarks of LI-COR Bioscience.

This datasheet was generated on February 12, 2025 at 07:52:59 PM. Visit product page to check for updated information before use.

Product link: <http://54.245.69.9/product/tubulin-beta-3-tubb3-monoclonal-mouse-antibody-tubb3-3731/>