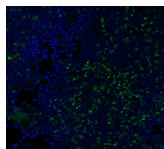




Glowing products for science

CD3e Monoclonal Mouse Antibody (RIV9)



Product Description

Reacts with five invariable CD3 chains designated CD3y, CD3d, CD3e, CD3f, and CD3n with molecular weight ranging from 16-28 kDa. CD3, also known as T3, is a member of the immunoglobulin superfamily that plays a role in antigen recognition, signal transduction, and T cell activation. It is found on all mature T-lymphocytes, NK, T-cells, and some thymocytes. It is expressed, typically at high levels, on peripheral T cells and majority of T cell neoplasms. Thymocytes express CD3 at different level on the cell surface in the course of differentiation and, in cortical thymus, CD3 is predominantly intracytoplasmic. This MAb is particularly useful for induction of T cell activation in vitro and in vivo due to its unusual IgG3 isotype.

Also view our [CD3e Monoclonal Mouse Biotium Choice Antibody \(SK7\)](#). The antibody belongs to the Biotium Choice list of select antibodies that have been developed and validated in-house for optimal performance. The antibody has been validated in flow cytometry.

Primary antibodies are available purified, or with a selection of fluorescent CF® dyes and other labels. CF® dyes offer exceptional brightness and photostability. See the [CF® Dye Brochure](#) for more information. Note: Conjugates of blue fluorescent dyes like CF®405S and CF®405M are not recommended for detecting low abundance targets, because blue dyes have lower fluorescence and can give higher non-specific background than other dye colors.

Stock status: Because Biotium offers a large number of antibody and conjugation options, primary antibody conjugates may be made to order. Typical lead times are up to one week for CF® dye and biotin conjugates, and up to 2-3 weeks for fluorescent protein and enzyme conjugates. Please email order@biotium.com to inquire about stock status and lead times before placing your order.

Catalog number key for antibody number 0322, Anti-CD3 (RIV9)

Call us : [800-304-5357](tel:800-304-5357) Email: btinfo@biotium.com

Product attributes

| | |
|---------------------------------------|--|
| Antibody number | #0322 |
| Antibody reactivity (target) | CD3 |
| Antibody type | Primary |
| Host species | Mouse |
| Clonality | Monoclonal |
| Clone | RIV9 |
| Isotype | IgG3, kappa |
| Molecular weight | 20 kDa |
| Synonyms | CD3 epsilon, CD3 TCR complex, CD3E, CD3e antigen epsilon polypeptide (TIT3 complex), Leu-4 epsilon chain, T cell antigen receptor complex epsilon subunit of T3, T-cell surface antigen T3, T-cell surface glycoprotein CD3 epsilon chain, T3E, TCRE, TIT3 complex |
| Human gene symbol | CD3E |
| Entrez gene ID | 916 |
| SwissProt | P07766 |
| Unigene | 3003 |
| Immunogen | Human peripheral lymphocytes |
| Antibody target cellular localization | Plasma membrane |
| Verified antibody applications | Flow (surface) (verified), IF (verified) |
| Species reactivity | Human, Mouse, Rat |
| Expected antibody applications | IHC (frozen), Functional studies (published for clone), IP (published for clone) |
| Antibody application notes | Higher concentration may be required for direct detection using primary antibody conjugates than for indirect detection with secondary antibody, Immunofluorescence: 1-2 ug/mL, Flow Cytometry 0.5-1 ug/million cells/0.1 mL, Optimal dilution for a specific application should be determined by user |
| Positive control | Jurkat cells. Tonsil and lymph node |
| Shipping condition | Room temperature |
| Storage Conditions | Store at 2 to 8 °C, Protect fluorescent conjugates from light, Note: store BSA-free antibodies at -10 to -35 °C |
| Shelf life | Guaranteed for at least 24 months from date of receipt when stored as recommended |
| Regulatory status | For research use only (RUO) |
| Antibody/conjugate formulation | Conjugates: 0.1 mg/mL in PBS/0.1% BSA/0.05% azide, HRP conjugates: 0.1 mg/mL in PBS/0.05% BSA, Purified: 0.2 mg/mL in PBS/0.05% BSA/0.05% azide, Purified, BSA-free: 1 mg/mL in PBS without azide |
| Product origin | Product may contain either bovine serum albumin (BSA) from bovine serum (Bos taurus), or recombinant BSA produced in Chinese hamster ovary cells. Inquire for the specific lot. |
| Antibody research areas | Immunology |
| Cell/tissue expression | Lymphocytes, T-cells |
| Tumor expression | Leukemia/lymphoma |

| Antibody # prefix | Conjugation | Ex/Em (nm) | Laser line | Detection channel | Dye Features |
|-------------------|--------------------|------------|------------|--------------------------|----------------------------------|
| BNC04 | CF@405S | 404/431 | 405 | DAPI (microscopy), AF405 | CF@405S Features |
| BNC88 | CF@488A | 490/515 | 488 | GFP, FITC | CF@488A Features |
| BNC68 | CF@568 | 562/583 | 532, 561 | RFP, TRITC | CF@568 Features |
| BNC94 | CF@594 | 593/614 | 561 | Texas Red® | CF@594 Features |
| BNC40 | CF@640R | 642/662 | 633-640 | Cy®5 | CF@640R Features |
| BNC47 | CF@647 | 650/665 | 633-640 | Cy®5 | CF@647 Features |
| BNC74 | CF@740 | 742/767 | 633-685 | 775/50 | CF@740 Features |
| BNCB | Biotin | N/A | N/A | N/A | |
| BNUB | Purified | N/A | N/A | N/A | |
| BNUM | Purified, BSA-free | N/A | N/A | N/A | |

Alexa Fluor, Pacific Blue, Pacific Orange, and Texas Red are trademarks or registered trademarks of Thermo Fisher Scientific; Cy is a registered trademark of Cytiva; IRDye, LI-COR, and Odyssey are registered trademarks of LI-COR Bioscience.

References

Note: References for this clone sold by other suppliers may be listed for expected applications.

1. Transplant Proc (1989) 21: 1026-7. (functional studies)
2. Eur J Immunol (1990) 20(4): 943-945. (immunoprecipitation)
3. Knapp W et al. (eds) Leukocyte Typing IV, p245 and 1059, Oxford University Press, Oxford, 1989.
4. Immunology (1994) 83: 457-464. (immunofluorescence, frozen tissue)
5. Schlossman S et al. (eds) Leukocyte Typing V. Oxford University Press, Oxford, 1995.

This datasheet was generated on May 9, 2025 at 12:17:26 PM. Visit product page to check for updated information before use.
Product link: <http://54.245.69.9/product/monoclonal-anti-cd3e-riv9/>