

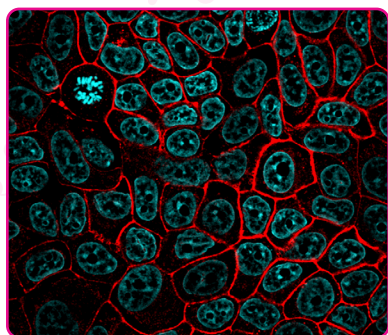
# Primary Antibodies

## Advantages

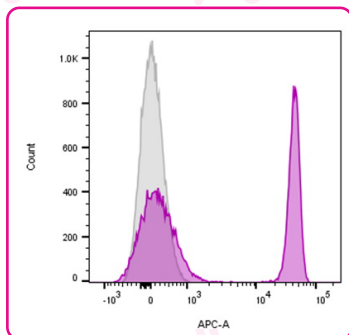
- More than 2000 monoclonal antibodies (see list of selected targets on next page)
- Growing selection of recombinant monoclonal Abs & monoclonal rabbit antibodies
- Choose from antibodies validated for IHC, IF, flow, and western blot
- Select mAbs verified as monospecific in HuProt™ human protein array representing over 21,000 unique human proteins
- Choose from 6 bright CF® Dyes and also biotin
- Purified antibodies available BSA-free, 1 mg/mL, ready to use for Mix-n-Stain™ labeling or other conjugation

## Unique accessory products

- EverBrite™ Mounting Medium to protect samples from photobleaching: wet-set and hardset options, with and without DAPI
- CoverGrip™ Coverslip Sealant replaces nail polish for coverslip sealing and won't leach into your sample
- TrueBlack® Lipofuscin Autofluorescence Quencher
- TrueBlack® WB Blocking Buffer and TrueBlack® IF Background Suppressor
- RedDot™ & NucSpot® fluorescent nuclear counterstains in multiple colors



Formaldehyde-fixed MCF-7 cells stained with 5 ug/mL CF\*568 Mouse anti-Ep-CAM (EGP40/826) (red) and Hoechst (blue).



Surface staining of human PBMC with CD4 (EDU-2) CF\*640R conjugate (magenta) compared to unstained cells (gray).

## Your choice of 6 bright and photostable CF® Dyes

CF® Dye	Ex/Em (nm)	Features
CF®405S	411/431	• Better fit for the 450/50 flow cytometer channel than Alexa Fluor® 405
CF®488A	490/516	• Less non-specific binding and spill-over than Alexa Fluor® 488 • Very photostable and pH-insensitive • Compatible with super-resolution imaging by TIRF
CF®568	562/584	• Optimized for 568 nm green laser line • Brighter and more photostable than Alexa Fluor® 568 • Compatible with TIRF and multicolor STORM
CF®594	593/615	• Brighter than Texas Red® or Alexa Fluor® 594 • Extremely photostable • Validated in 2-photon microscopy
CF®640R	642/663	• Most photostable Cy®5-like dye with excellent brightness • Compatible with TIRF & FLIMP super-resolution techniques
CF®647	652/668	• Brighter than Cy®5 • Compatible with super-resolution imaging by STORM

## Your choice of size and format

Format	Concentration	Size
CF® Dye conjugates (6 colors)	0.1 mg/mL	100 or 500 uL
Biotin	0.1 mg/mL	100 or 500 uL
Purified, with BSA	0.2 mg/mL	100 or 500 uL
Purified, BSA-free (Mix-n-Stain™ ready)	1 mg/mL	50 uL

# Choose fluorescent or biotin conjugates, purified or BSA-free

View more available antibody targets on our website using our [Antibody Finder](#).

<b>A</b>	CD35 / CR1	Cytokeratin 5/8	<b>H</b>	MRP-1 / ABCC1	S100A4
A. Forssman	CD36	Cytokeratin 6	HCG-alpha	MRP-14	S100A9
ACTH	CD37	Cytokeratin 6A	HCG-beta	MRSA	S100B
AMP Deaminase 3	CD38	Cytokeratin 7	HCG-intact	Mucin 1 / EMA / Episialin / CD227	Secretory Component / ECM1
Adiponectin	CD40	Cytokeratin 8	Helicobacter pylori	Mucin 18	SHBG
Adipophilin	CD41a	Cytokeratin 8/18	Heparan Sulphate	Mucin 2	Small Cell Lung Cancer
AFP	CD43	Cytokeratin 10	Proteoglycan	Mucin 3	Smooth Muscle Actin
AIF1 / Iba1	CD44v4	Cytokeratin 10/13	Hepatocyte Specific Antigen	Mucin 5AC	SOX2
Akt1	CD44v6	Cytokeratin 14	HER-2 / CD340	Mucin 6	SOX10
Albumin	CD44v9	Cytokeratin 15	HIF1	Muscle Specific Actin	SOX9
ALDH1A1	CD45 / LCA	Cytokeratin 16	Histiocytoma Marker	Myeloid-Associated	Spectrin Alpha 1
ALK / CD246	CD45RA	Cytokeratin 17	Histone H1	Differentiation Marker	Spectrin Beta III
Alkaline Phosphatase	CD45RB	Cytokeratin 18	HIV-16	MyoD1	STAR
Alpha-1 Antichymotrypsin	CD45RO	Cytokeratin 19	HLA-A	Myogenin	STAT3
Alpha-1 Antitrypsin	CD44 Standard	Cytokeratin 20	HLA-Aw32 & HLA-A25	Myosin, Smooth Muscle Heavy Chain	STAT6
Alpha-1 Catenin	CD46	Cytokeratin, Acidic	HLA-B	<b>N</b>	SUMO-1
AMACR / p504S	CD47	Cytokeratin, Basic	HLA-DRA	Napsin-A	SUMO-2
Androgen Receptor	CD48	Cytokeratin, HMW	HLA-DRB	NDRG1	SUMO-2/3
ASRGL1	CD50	Cytokeratin, LMW	HLA-DP	Neurofilament, Light	Superoxide Dismutase
ATRX / RAD54	CD53	Cytokeratin, multi	HLA-DQ	Neurofilament, Heavy	<b>T</b>
Aurora B	CD54 / ICAM-1	Cytokeratin, pan	HPV-16	NGFR	TACSTD2 / TROP2
<b>B</b>	CD55	<b>D</b>	HSP27	NGX2.2	TAG-72 / CA72.4
B7-H4	CD56 / NCAM	Delta Catenin	HSP60	NKX6.1	TCF4
Bax	CD57 / B3GAT1	Desmin	HSV1	Nox4	TCL1
BCL-10	CD59	Desmocollin-2/3	Human Leukemia Antigen	NSE gamma	TDPP2 / EAP2
Bcl-2	CD61	Desmoglein-1	Human Nuclear Antigen	Nuclear Antigen	Tenascin
Bcl-6	CD63	Desmoglein-2	Human Papillomavirus (HPV) 16	Nuclear Membrane	Tenascin C
Bcl-X	CD66	Desmoglein-3	<b>I</b>	Nucleolar / Nucleoli	Testosterone
Beta Catenin	CD68	DNMT3A	IDH1	Nucleolin	TGF-alpha
Beta-2 Microglobulin	CD70	DOG-1	IgA Immunoglobulin	Nucleophosmin	TGF-beta
Biotin	CD71	Double Stranded DNA	IgA Secretory Component	NuMA	Thrombomodulin
Blood Group A	CD74	<b>E</b>	IgD Immunoglobulin	Oct-2	Thymidine Phosphorylase
Blood Group B	CD79a	E-Cadherin / CD324	IGF-1	OLIG2	Thymidylate Synthase
Blood Group H Type 2	CD80	E. coli O157	IgG4 Immunoglobulin	Ornithine Decarboxylase-1	Thyroglobulin
BOB.1	CD81	EGFR	IgG Immunoglobulin	<b>P</b>	TIA1
Bovine Serum Albumin	CD84	EGFRvIII	IgM Immunoglobulin	p21 / WAF1	TIMP2
BRCA1	CD86	Elastin	IL3RA / CD123	p24-HIV	TLE1
BrdU	CD90 / Thy1	EMI1	IL-6	p27 / KIP1	TNF-alpha
<b>C</b>	CD95	Endoglin	Insulin	p34 / cdk1	TNFS15 / VEGI
c-Myb	CD98	Eosinophil Peroxidase	Interferon alpha-1	p40	Topoisomerase I, MT
c-Myc	CD99	Ep-CAM / CD326	Interferon alpha-2	p53 Tumor Suppressor	Topoisomerase II-alpha
CA19-9	CD100	Erythrocyte Specific	Interferon gamma	p55;50 EBV-Early Antigen	TOX3
Caldesmon, HMW	CD104	Erythropoietin	Interleukin 10	p57 / KIP2	TPO
Calgranulin B	CD105 / Endoglin	Estrogen Receptor	Involucrin	p63	TRACp
Calnexin	CD106 / VCAM1	Estrogen Receptor alpha	IPO-38	Parathyroid Hormone	Transgelin / SM22-alpha
Calponin-1	CD117	Estrogen Receptor beta 1	Isotype control	PAX2	Transglutaminase II
Calprotectin	CD123	ETS1	<b>K</b>	PAX5	TRIM29
Campylobacter jejuni	CD141 / Thrombomodulin	<b>F</b>	Kappa Light Chain	PAX6	TRP1
Carbonic Anhydrase IX	CD146 / Mucin 18 / MCAM	Factor XIIIa	Ki-67	PAX7	Tryptase
CD1a	CD147	Fascin-1	Ksp-Cadherin / CDH16	PAX8	TSH receptor, A chain
CD1b	CD171 / L1CAM	Ferritin, Light Chain	Ku-Holo	P-Cadherin	TSH receptor, B chain
CD2	CD176 / T-F Ag	FGF23	<b>L</b>	PCNA	TTF-1 / NKX2.1
CD3e	CD195 / CCR-5	Fibronectin	LAIR 1	PD1 / PDCD1 / CD279	Tyrosinase
CD4	CD209 / DC-SIGN	Filaggrin	Lambda Light Chain	PD-L1 / CD274 / B7-H1	Tyrosinase-Related Protein
CD5	CD257	FITC	Laminin	PGP9.5 / Uchl1	<b>U</b>
CD6	CD269	FLI1	LEC Chemokine	Phosphotyrosine	UACA / Nucling
CD7	CD282 / TLR2	FOXA1	Lewis A	Plakophilin-1	Ubiquitin
CD8	CD284 / TLR4	FOXP3	Lewis B	PLAP	UGT1A9
CD8A	CD325 / N-cadherin	FSH-beta	Lewis Y	Plasma Cell Marker	UPK3A
CD10	CD326 / EpCAM	FSH Receptor	Liver Canaliculi	PLGF	<b>V</b>
CD11a	CD340 / HER-2	<b>G</b>	LHCGR	Pmel17 / gp100 / SILV	VEGF-A
CD11b	Cdc20	Galectin-1	Lung Specific Antigen	Podocalyxin	VEGFR1 / Flt-1
CD11c	CDw17	Galectin-13	Luteinizing Hormone beta	Podoplanin	VEGFR2 / Flk-1
CD13	CDw60	Gamma Catenin	<b>M</b>	Progesterone	VEGI
CD14	CDw75	GCDFP-15	Macrophage Specific Antigen	Progesterone Receptor	Villin
CD15 / FUT4 / Lewis x	CDX2	GCSF	MAGE A1	Prolactin Receptor	Vimentin
CD16 / Fc-gamma Receptor III	CELA3B	GFAP	Major Vault Protein	Prostate Specific Antigen (PSA)	VLDL receptor
CD18	CFTR	GLG1	MALT-1	Prostate Specific Acid Phosphatase	von Willebrand Factor
CD19	Chromogranin A	Glucose Regulated Protein 94	MAML2	Protocadherin FAT2	<b>W</b>
CD20	Clathrin, Heavy Chain	GLUT-1	MAML3	Proximal Nephrogenic Antigen	Wilm's Tumor 1 (WT1)
CD21	Clathrin, Light Chain	Glycophorin A / CD235a	MART-1 / Melan-A	pS2	<b>Z</b>
CD22 / BL-CAM	CMV-p65	Glypican-3	MCM7	PTH / Parathyroid Hormone	ZAP70
CD25	Complement C4d	GM-CSF	Melanoma Marker	PU.1	
CD26	Connexin 32	GnRH-Receptor	Melanosome / gp100	<b>R</b>	
CD27	Creatine Kinase-BB	Golgi Complex	Milk Fat Globulin	Rabies	
CD28	Creatine Phosphokinase	gp100 / Melanosome	MITF	Rb1	
CD30	Cyclin A2	GP2 / ZAP75	Mitochondrial Marker	Renalase	
CD31 / PECAM-1	Cyclin B1	GPN1 / XAB1	MMP2 / Collagenase	Retinol Binding Protein-1	
CD32	Cyclin D1	Granzyme B	MMP9	<b>S</b>	
CD33	Cyclin E	Growth Hormone	Moiesin	S100	
CD34	Cytochrome c				

Biotium offers a large collection of monoclonal antibodies, with over 2000 different clones (multiple clones are available for many targets). Our collection is always growing. Visit [www.biotium.com](http://www.biotium.com) to see our current offerings.

[www.biotium.com](http://www.biotium.com)  
 General Inquiries: [order@biotium.com](mailto:order@biotium.com)  
 Technical Support: [techsupport@biotium.com](mailto:techsupport@biotium.com)  
 Phone: 800-304-5357

v8.10.22  **biotium**