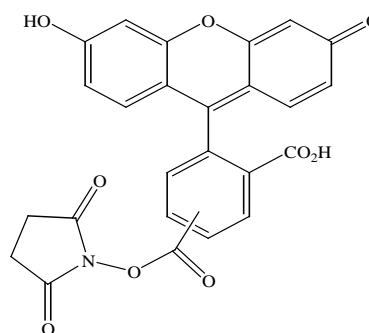


## PRODUCT AND SAFETY DATA SHEET

**PRODUCT NAME:** 5-(and-6)-carboxyfluorescein, succinimidyl ester (5(6)-FAM SE)**CATALOG #** 90024**MOLECULAR INFORMATION:** C<sub>25</sub>H<sub>15</sub>NO<sub>9</sub>  
MWt: 473  
[117548-22-8]**PROPERTIES:**

<b>Color &amp; Form</b>	Yellow solid
<b>Purity</b>	98% by TLC
<b>Solubility</b>	Soluble in DMF, DMSO
<b>Absorption/Emission</b>	495nm/519nm (pH 9)
<b>Extinction Coefficient</b>	74,000

**STORAGE AND HANDLING:** Store desiccated at -20 °C. Protect from light, especially when in solution.**APPLICATION:** 5(6)-FAM SE is an amine-reactive green fluorescent dye widely used for labeling proteins or other biomolecules that contain a primary or secondary aliphatic amine. The coupling reaction is usually carried out at pH 8-9.5. The amide linkage from the coupling reaction is much more stable than the thiourea linkage formed from the coupling of an amine and a isothiocyanate.Ref: *Bioconjugate Chem.* 6, 447(1995)**TOXICITY:** Not established. Not listed by NTP, IARC or OSHA.

<b>FIRST AID:</b>	Potentially harmful. Avoid prolonged or repeated exposure. Avoid getting in eyes, on skin, or on clothing. Wash thoroughly after handling. If eye or skin contact occurs, wash affected areas with plenty of water for 15 minutes and seek medical advice. In case of inhaling or swallowing, move individual to fresh air and seek medical advice immediately.
-------------------	---

<b>Disclaimer:</b> <i>Materials from Biotium are sold for research use only, and are not intended for food, drug, household, or cosmetic use. Biotium is not liable for any damage resulting from handling or contact with this product.</i>
--