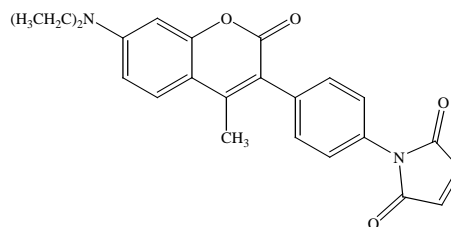


## PRODUCT AND SAFETY DATA SHEET

**PRODUCT NAME:** CPM (7-diethylamino-3-(4'-maleimidylphenyl)-4-methylcoumarin)**CATALOG #** 91010**MOLECULAR INFORMATION:** C<sub>24</sub>H<sub>22</sub>N<sub>2</sub>O<sub>4</sub>  
MWt: 402.45  
[76877-33-3]**PROPERTIES:**

**Color & Form** Yellow solid  
**Purity** ≥ 98% by HPLC  
**Solubility** Soluble in anhydrous DMSO  
**Absorption/Emission** 384nm/469nm (MeOH)  
**Extinction Coefficient** 33,000

**STORAGE AND HANDLING:**

We recommend the use of anhydrous DMSO to make stock solution. Store both stock solution and the solid at -20 °C and away from moisture.

**APPLICATION:**

CPM is probably the most widely used blue fluorescent thiol-reactive dye. This maleimide derivative of coumarin is essentially nonfluorescent until it reacts with thiols, making it possible to quantify thiols without a separation step. CPM is a good energy acceptor from tryptophan and a good energy donor to fluorescein.

Ref.: 1) *Biochemistry*, **22**, 5369(1983); 2) *Anal. Lett.* **18**, 393(1985); 3) *J. Biol. Chem.* **265**, 14796(1990).

**TOXICITY:**

Not established. Not listed by NTP, IARC or OSHA.

**FIRST AID:**

Potentially harmful. Avoid prolonged or repeated exposure. Avoid getting in eyes, on skin, or on clothing. Wash thoroughly after handling. If eye or skin contact occurs, wash affected areas with plenty of water for 15 minutes and seek medical advice. In case of inhaling or swallowing, move individual to fresh air and seek medical advice immediately.

**Disclaimer:** Materials from Biotium are sold for research use only, and are not intended for food, drug, household, or cosmetic use. Biotium is not liable for any damage resulting from handling or contact with this product.